

Vehicular Access Case Studies

About Us



Transport Dynamics are transport planning specialists who understand the planning process and provide access, traffic and transport advice.

It is our legendary attention to detail, innovative thinking, persistence and service speed that has resulted in a renowned track record of success, a huge following from satisfied clients and substantial word of mouth recommendations.

We offer a comprehensive service to a wide range of private and public sector clients, landowners and private applicants, providing advice for all types of development from early feasibility studies to planning approval, post consent negotiations and scheme construction.

We are able to provide advice on all stages of development projects from initial feasibility work through to occupation, including transport assessments, travel planning, discharge of transport related conditions and construction logistics.

This document sets out a handful of recent vehicular access case studies across many English counties, cities, towns and villages.



**Robust speed surveys +
Excellent access design +
Sound visibility splays +
Vital swept path analysis +
The Transport Dynamics Approach
= PLANNING CONSENT.**

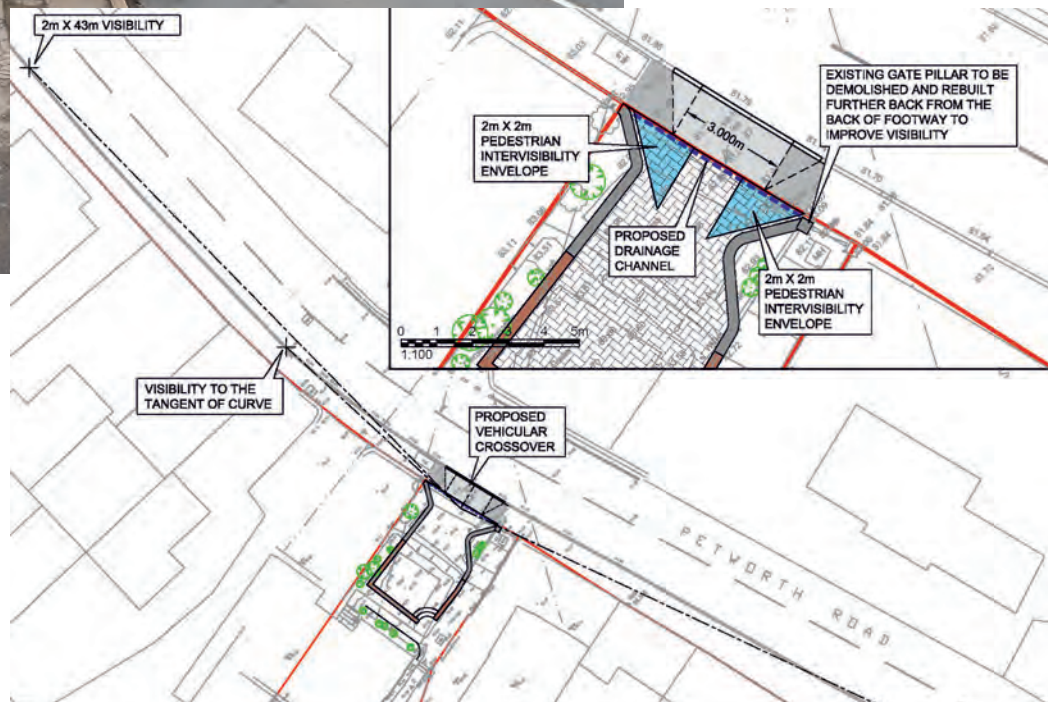
Built Out Brand New Dedicated Off-Street Parking Chittenden Cottage, Hawkhurst, Kent.

Creation of Brand New Off-Street Vehicle Parking Space, Petworth Road, Witley, Hampshire.



BEFORE = soaking wet children + dog + heavy pushchair + Split shopping bags.

AFTER = ease of access + dry Dog!



Transport Dynamics were employed to obtain planning consent for an off-street dedicated parking space with electric vehicle charging facilities.

Our work resolved issues relating to visibility splay, vehicle movements and pedestrian intervisibility.

Key access services offered



We offer the following key services in relation vehicular access solutions;

- Feasibility Review
- Access Arrangements
- Visibility Splay Assessments
- Speed Surveys
- Vehicle Swept Path Analysis
- Technical Drawing and Assistance
- Dealing with local authorities
- Dropped Kerb advice and Applications

For Further Information please contact Tom Swift
tom.swift@tdynamics.co.uk / 07857 448444

www.tdynamics.co.uk



Transport Dynamics were approached to support a proposal for the creation of an off-street vehicular access and driveway at a property on the B2028 at Turners Hill, West Sussex. The property had no existing off-street access. Creation of an off-street space would remove the need to park on-street and add value to the property.

To allow the creation of the new access we dealt with West Sussex County Council, slotted the design into a constrained location within a new road layout and signalised crossing, undertook vehicle speed surveys and visibility splay assessments and created a turning head for vehicles to enter and exit in forward gear.

The scheme has been built out, resulting in an excellent piece of engineering, a functional parking facility and adding significant value to the property.

Betterment in Bethersden

Before & After at Bull Lane, Bethersden, Kent.

Creation and relocation of a new vehicular access from a sub-standard highway bend dramatically improving highway safety.



Intensified Vehicular Access at A12 Junction 31, Holton St Mary, Suffolk.

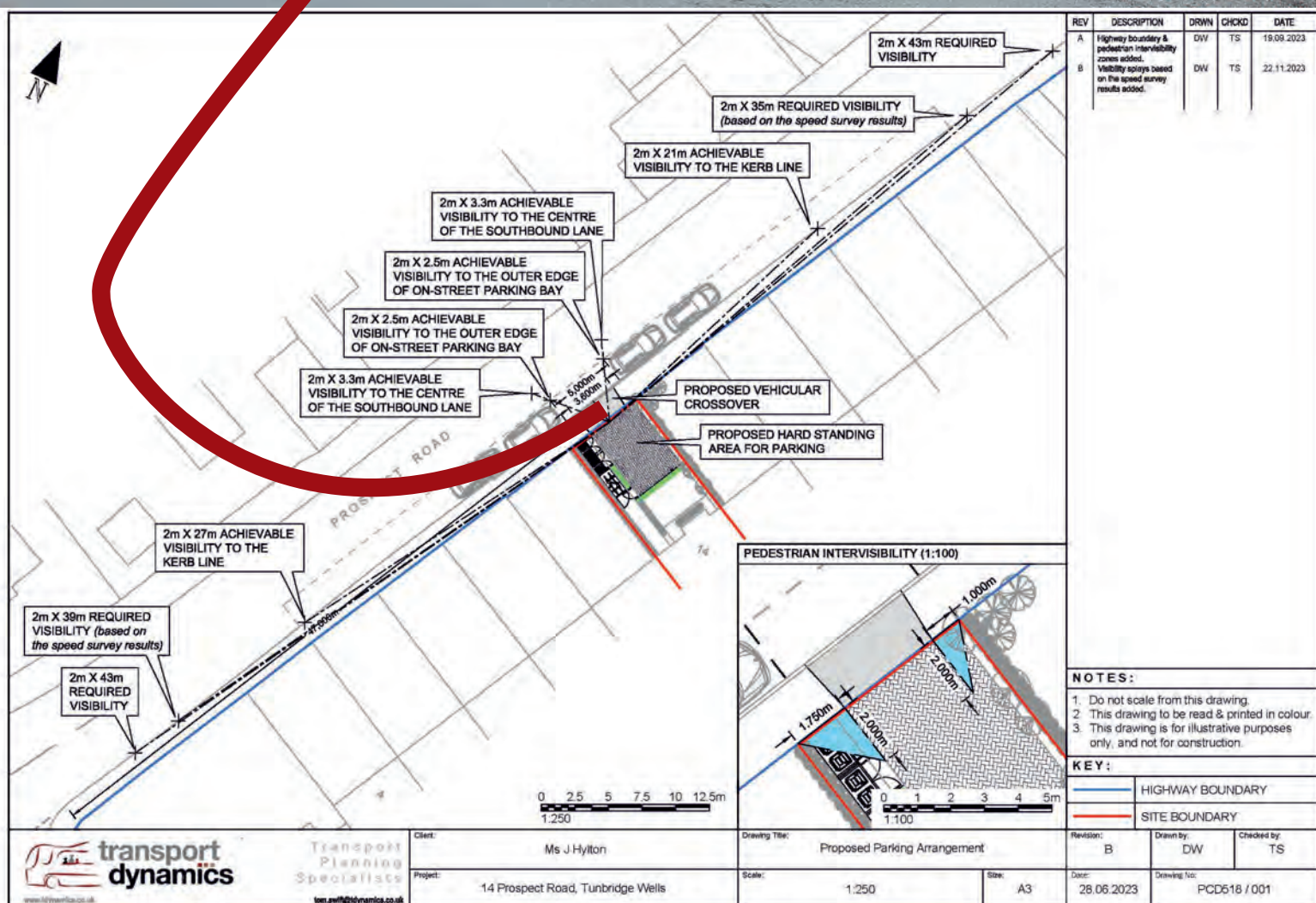
Transport Dynamics were appointed to defend a previously refused scheme by Mid Suffolk District Council on visibility splay concerns and access traffic intensification.

Our thorough work with a strong evidence base disproved Suffolk County Council Highways unfounded 'opinions', resulting in the grant of planning consent for a large residential barn conversion and the creation of significant property value.

Highways objection removed, planning consent granted.



Transport Dynamics took an initial difficult and challenging proposal through a KCC Highways Pre-Application Approach which highlighted many issues. We chipped away at the issues, refining a proposal which resulted in no highway objection and planning consent.



Dropped Kerb Arrangement, Basildon, Essex.

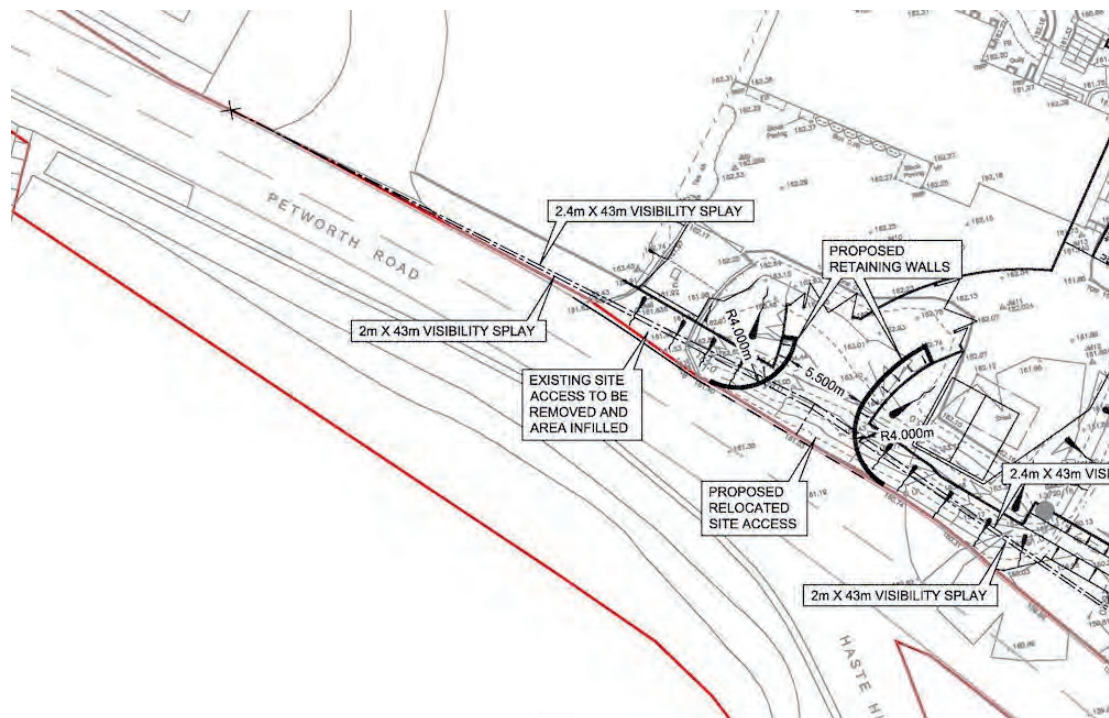
Transport Dynamics were asked to provide traffic and transport support to create a dropped kerb arrangement at Basildon, Essex. We satisfied Essex County Council Highways with regards visibility splay and intensification of use. All issues were resolved and the dropped kerb implemented with ease.

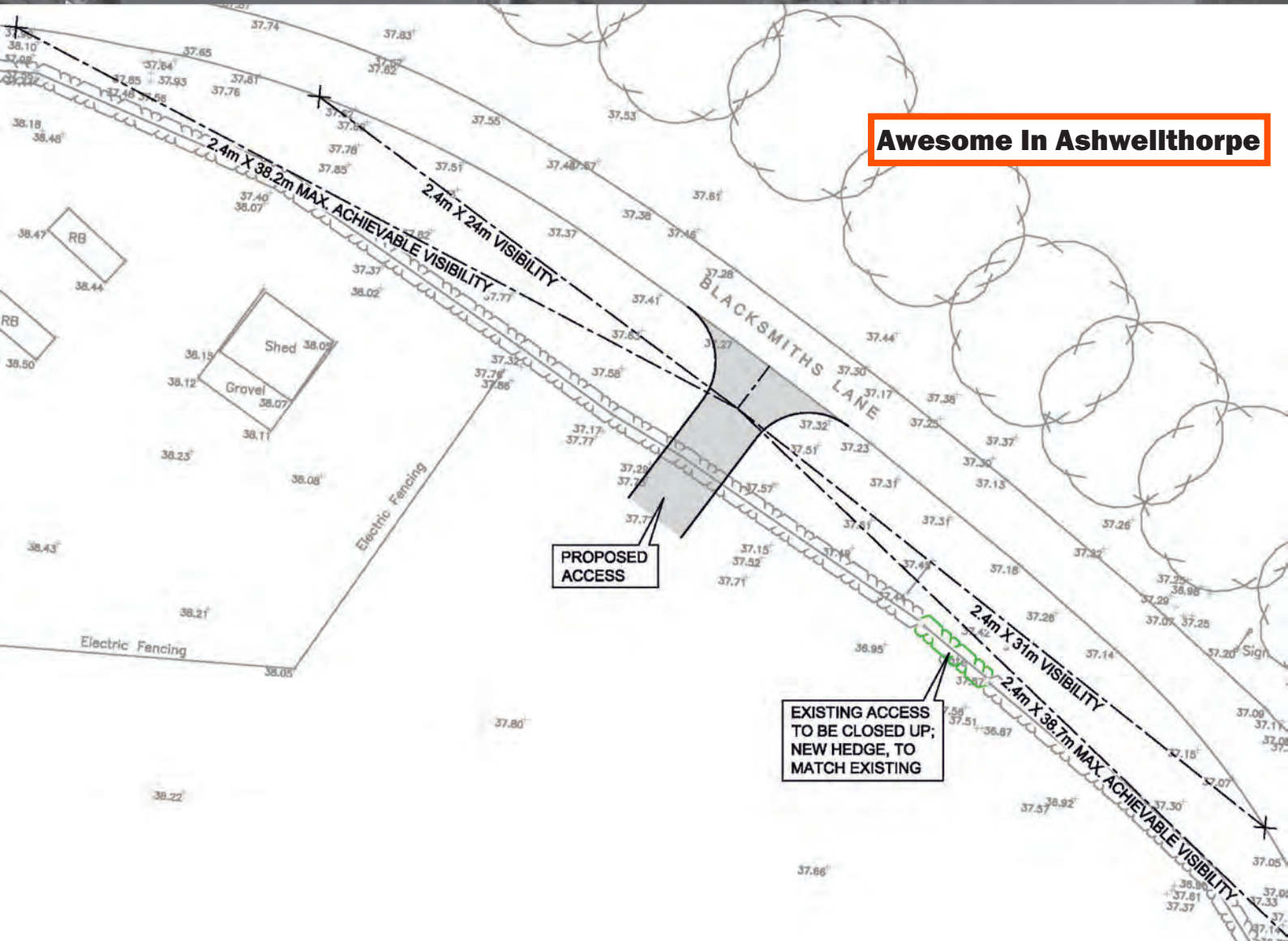
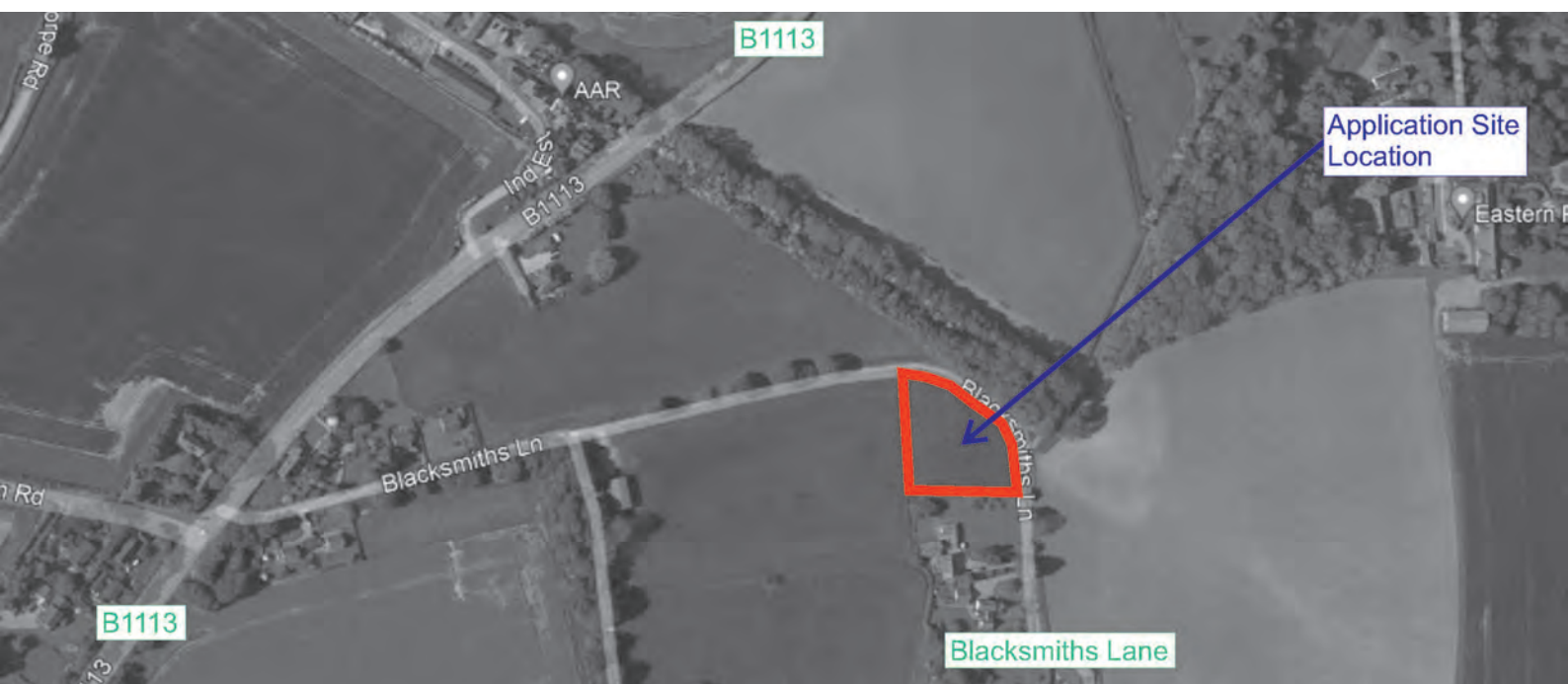


Petworth Road, Haslemere, Surrey.

Transport Dynamics were instructed to resolve highway issues raised as part of a planning application via a neighbour representation.

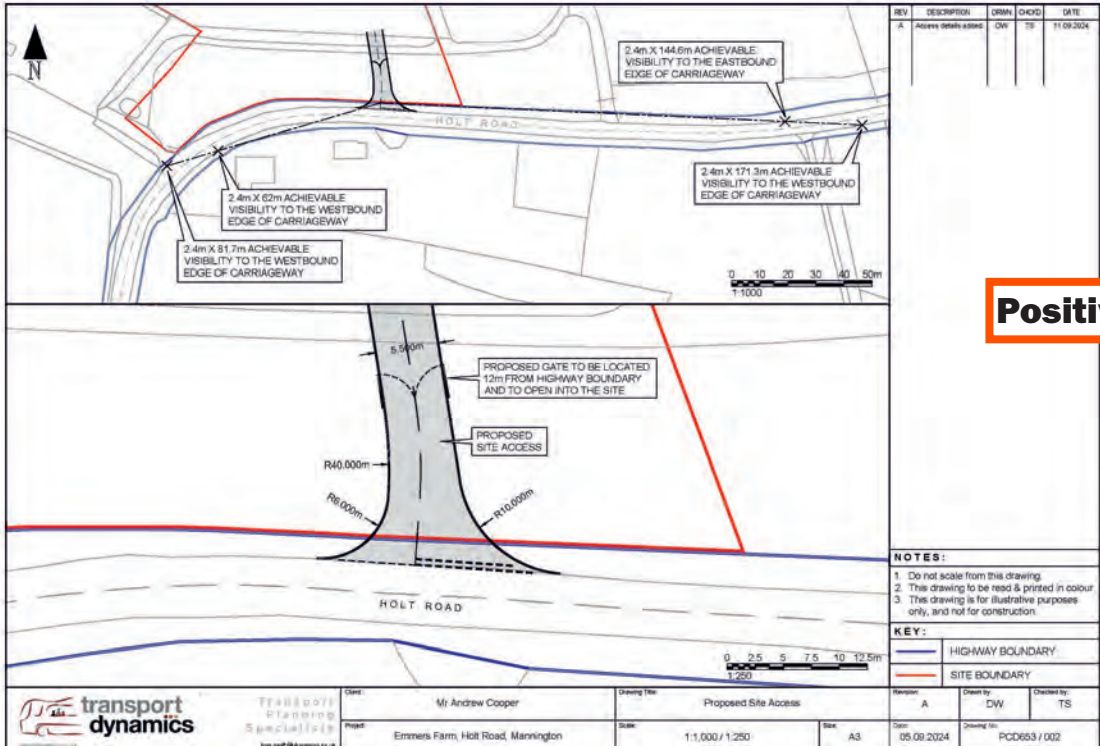
Our team set out the proposal in full, providing methodical detail and working through the items raised, involving access design, retaining wall advice, visibility splay review and swept path analysis. This resulted in planning consent for a new access and the creation of an additional dwelling.



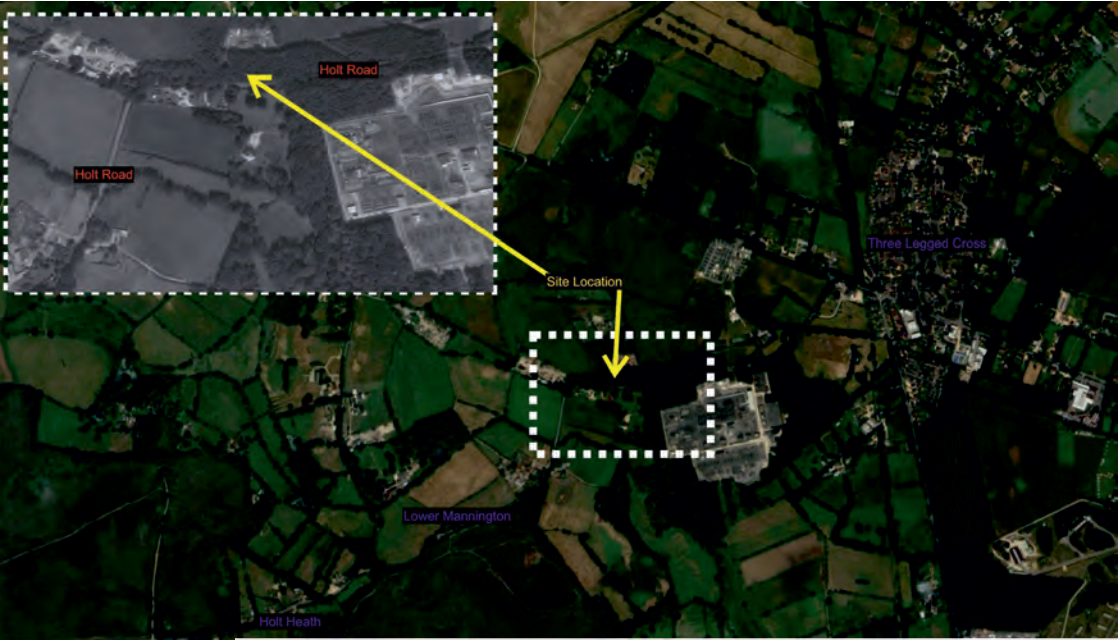


Transport Dynamics were commissioned to provide technical advice and design to allow the creation of a new vehicular access crossover to allow for future residential development. No previous access existed.

Our work involved technical design, a 7-day speed survey, supporting Highways Statement and general advice.

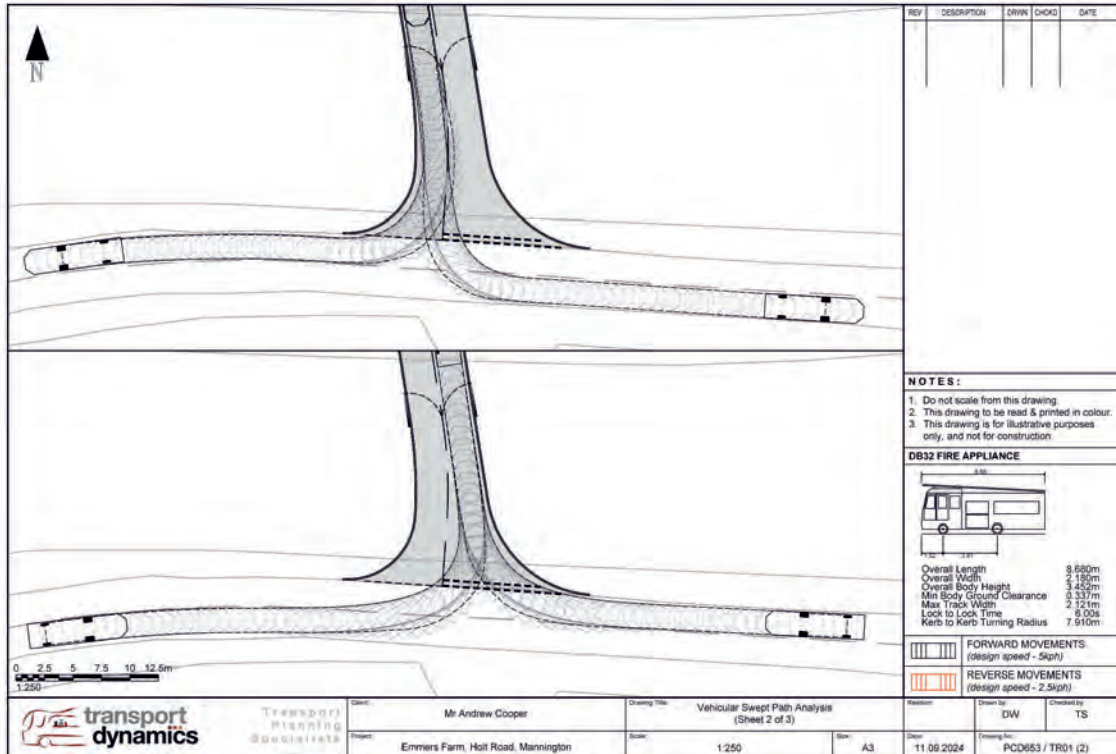


Positive BESS result

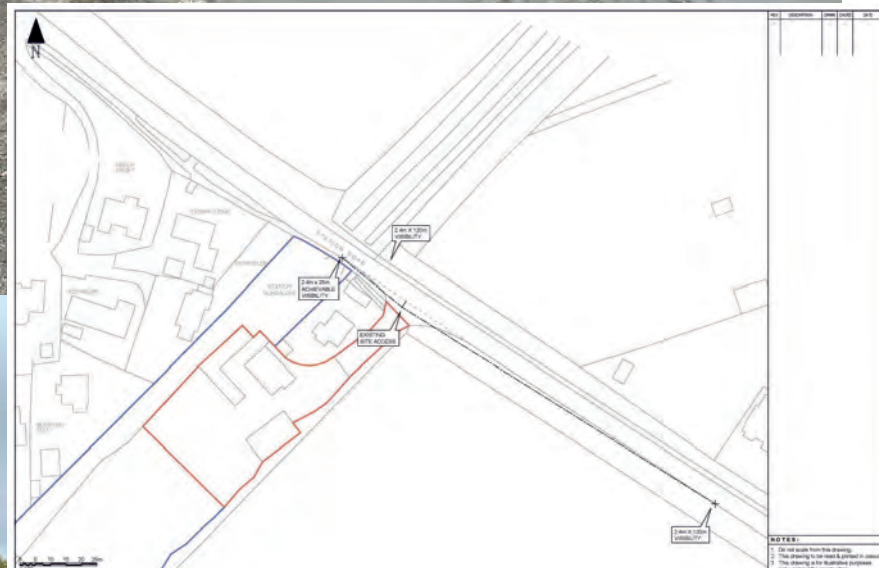


Transport Dynamics were engaged to resolve long standing vehicular access issues for a proposed Battery Energy Storage System complex.

We reviewed the proposal in full, providing methodical detail and working through the issues, involving access design, emergency access, visibility splay review and swept path analysis.

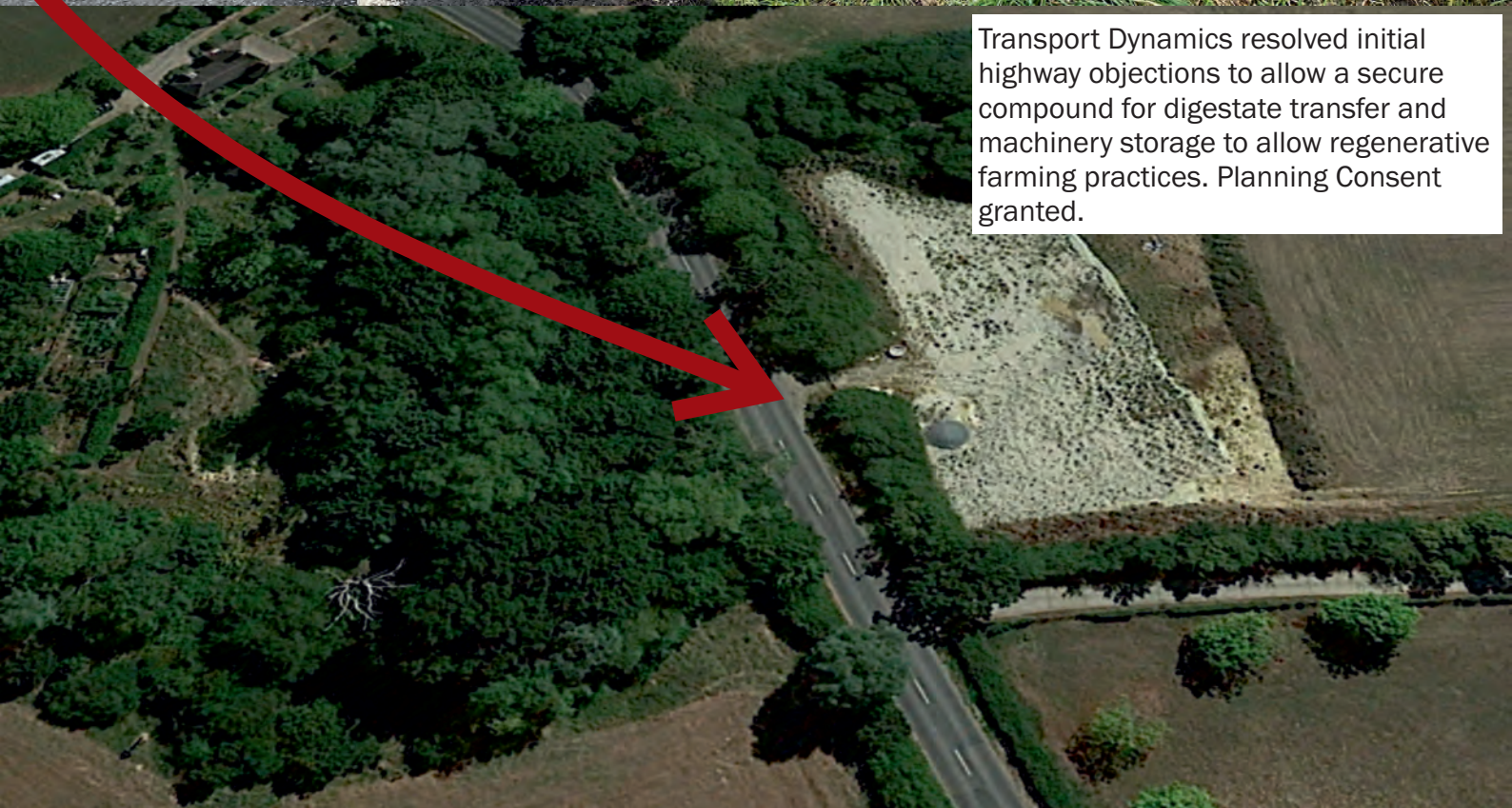


Astounding in Alvescot



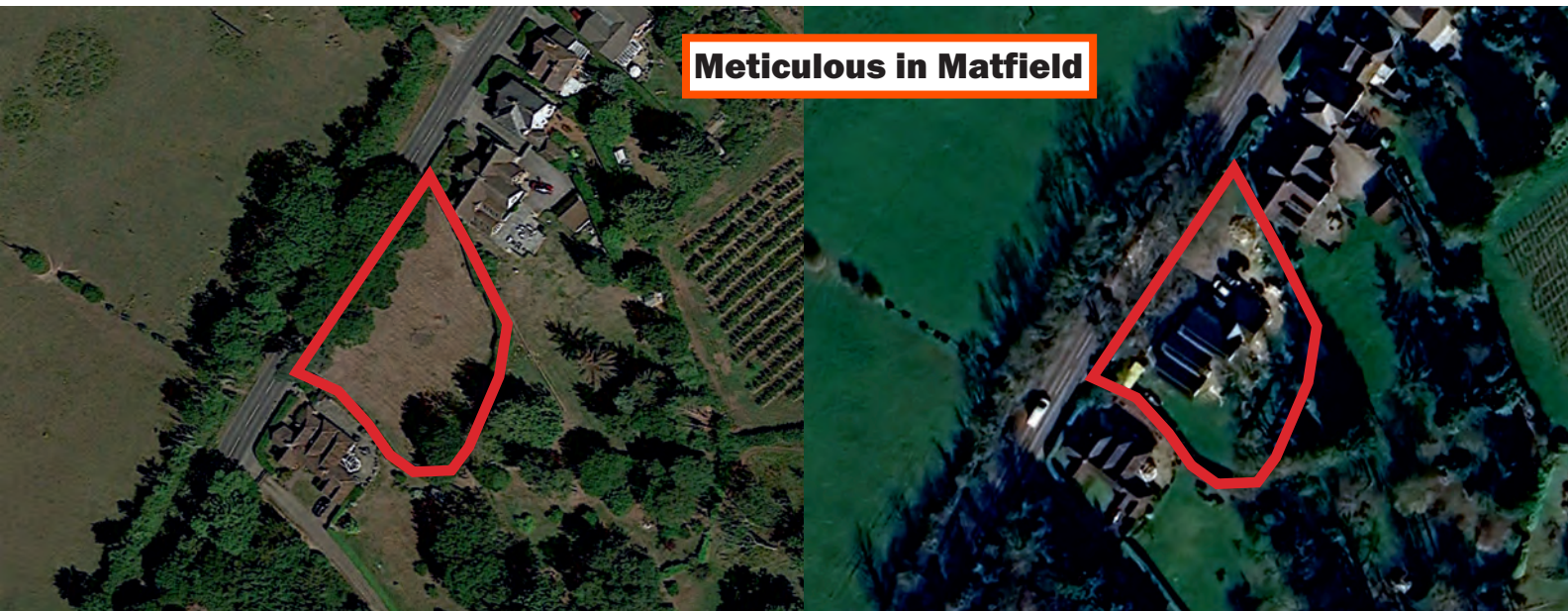
Transport Dynamics were required to obtain planning consent for the re-use of an existing former coal yard which generated HGV trips through a substandard access. Our work allowed consent based on a reduction in traffic and improvements to access arrangements.

Unbiddable in Biddenden



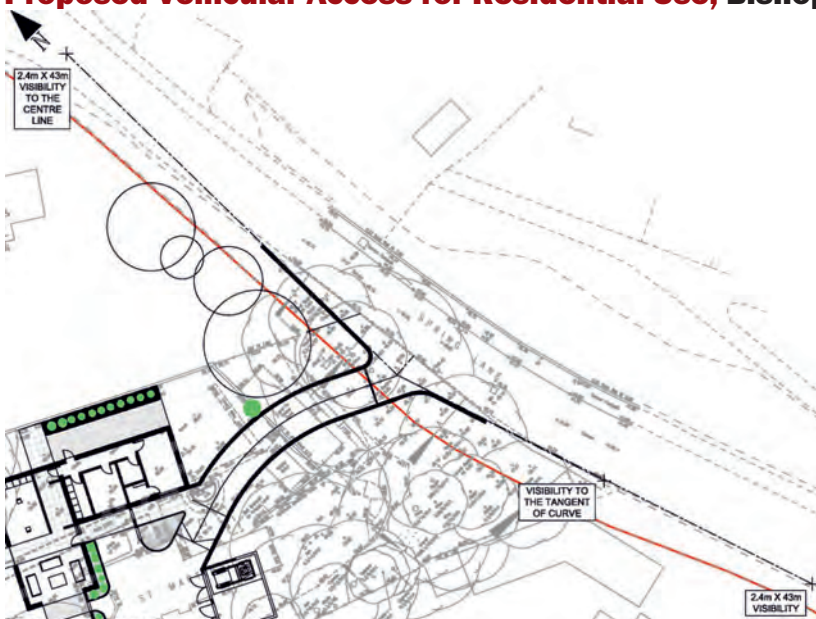
Transport Dynamics resolved initial highway objections to allow a secure compound for digestate transfer and machinery storage to allow regenerative farming practices. Planning Consent granted.

Built New Residential Dwelling, Land Adjacent Friars Lodge, Maidstone Road, Matfield, Kent.



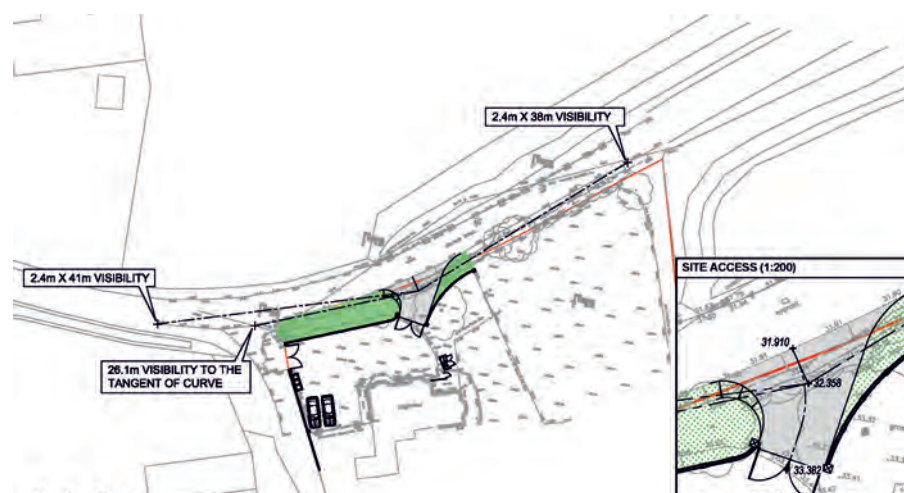
Our expert advice with total focus and endeavour unlocked a site for residential development. Our work involved resolving a tricky 60mph National Speed Limit, with constrained visibility and challenging site conditions. Planning Consent granted, property built.

Proposed Vehicular Access for Residential Use, Bishopstoke, Hampshire.



Transport Dynamics were contracted to provide technical design advice to overturn an existing highways objection to a proposed vehicular access. Our work resolved all outstanding issues resulting in the removal of the highways objection.

Planning Consent For Vehicular Access, Clement Street, Hextable, Kent.

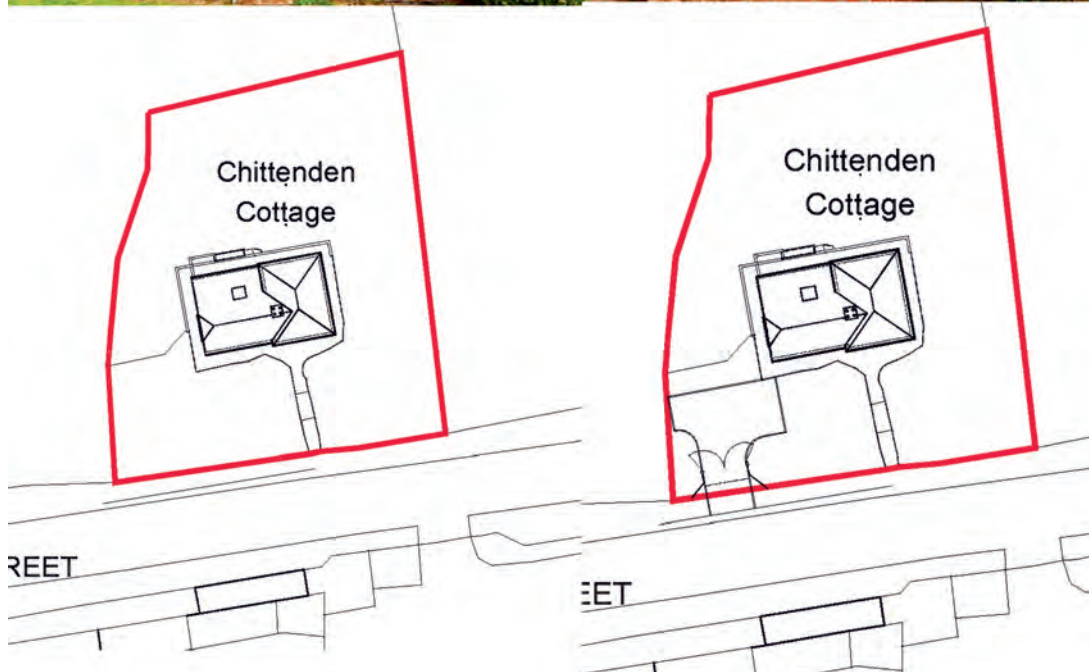


Transport Dynamics have removed a Highways Objection by Kent County Council against the creation of a new access at Northview, Clement Street, Hextable, Kent.

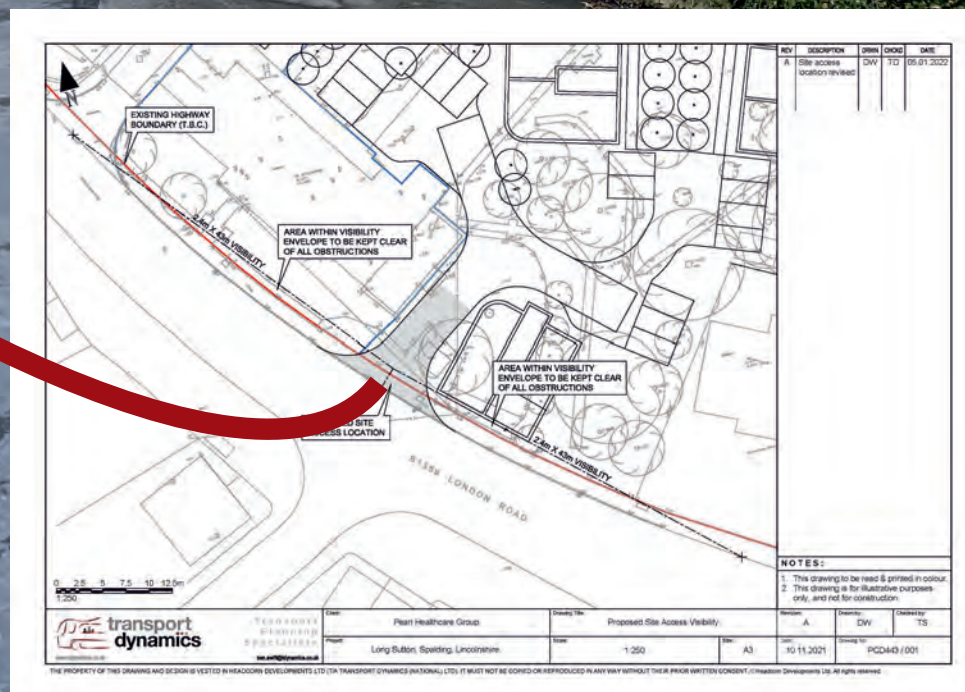
The original objection was based around speed and visibility splay issues.

Our expert advice resolved all matters allowing for the creation of a two-way, wide crossover significantly uplifting property value and creating an off-street access.

Planning Consent For Vehicular Access, Chittenden Cottage, High Street A268, Hawkhurst, Kent.

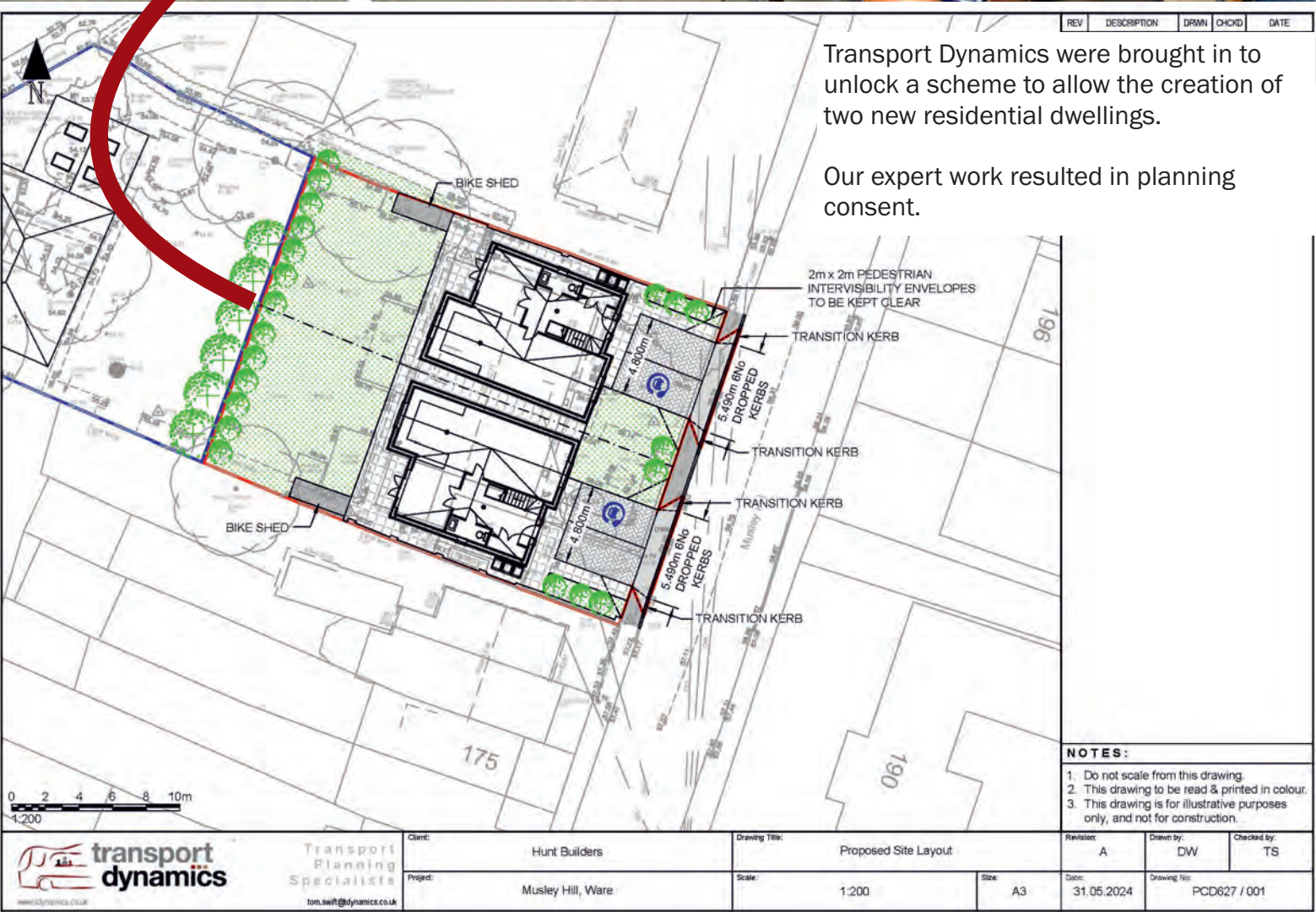


Planning Consent For Vehicular Access, Long Sutton, Spalding, Lincolnshire.



Transport Dynamics provided advice to allow the creation of a brand new access to support a care home extension. Our work resulted in efficient operation and intensive use of an asset.

Extended Access and New Access Crossovers Musley Hill, Ware, Hertfordshire



For Further Information please contact Tom Swift
tom.swift@tdynamics.co.uk / 07857 448444

www.tdynamics.co.uk

Creating simplicity in a complex world.